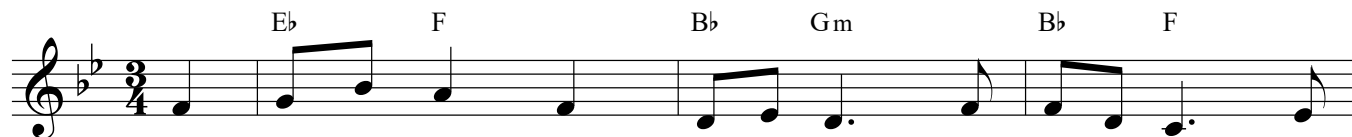
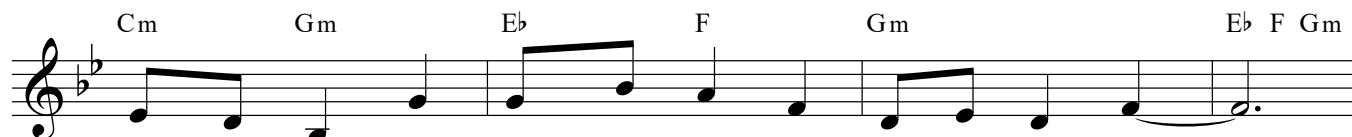


Again, as Evening's Shadow Falls



1. A - gain, as eve - ning's shad - ow falls, We gath - er in these
 2. May strug - gling hearts that seek re - lease Here find the rest of
 4. Life's tu - mult we must meet a - gain, We can - not at the



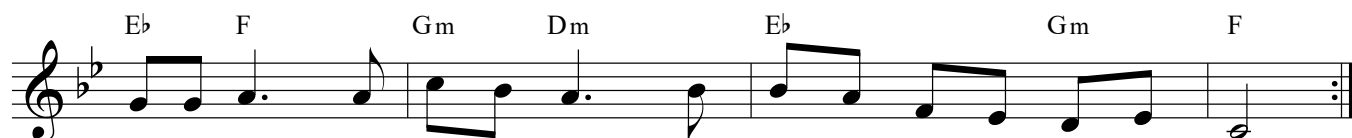
hal - lowed walls; And ves - per hymn and ves - per prayer Rise _____
 God's own peace; And strength - ened here by hymn and prayer, Lay _____
 shrine re - main; But in the spir - it's se - cret cell May _____



min - gling on the ho - ly air. 3. O
 down the bur - den and the care.
 hymn and prayer for - ev - er dwell.



God, our light! to Thee we bow; With - in all shad - ows stand - est Thou; Give



deep - er calm than night can bring; Give sweet - er songs than lips can sing.

Text - Samuel Longfellow (1819-1892)

Tune - Mitchell Fund